



AL6700 System Portable Test & Telemetry Unit



The AL6700 Portable Test & Telemetry Unit leverages our 25+ years of experience in the aerospace, test, and telemetry communities. We have integrated into the unit's sleek and durable design some of the most popular functionality from our Tester, Data Transport, and Signal Interface Products, making the AL6700 suitable for a wide range of applications. In developing the AL6700, our designers and engineers set out and achieved one mission – To design an ADEPT product, an Adaptable, Durable, Easy to use, and Portable Test/Telemetry unit.

A core element of the AL6700 is a Bit Error Rate (BER) Tester, a critical capability to ensure the integrity and quality of data communication links. With over two decades experience, our BER Testing technology has become a gold standard in our markets. However, the capabilities in this sophisticated box are far beyond routine BER Testing because it incorporates many popular functions from our Data Link Test Set, Multiplexer, and Interfacer product lines. Different modules can be included to combine BER testing with Microwave RF, PCM simulation, Data Transport, and Protocol Conversion and since the unit is modular, users can adapt it to their specific needs by including only the modules they require. Best of all, as needs change over time, alternate modules can be added to quickly and cost effectively adapt the AL6700 to the new requirements.

Ease of set-up and use are achieved with our intuitive graphical interface; Ethernet remote control; and Set-up Software, which is simple to use and provides a high level of customization to enable users to optimize the unit to their specific needs. Moreover, the portability of the unit makes it adaptable for use in both, test and telemetry facilities/labs and remote test sites. For users who only occasionally require portability, we offer a rack mount kit, making it ideal for lab applications. Conversely, for the user who will use the unit for extended times in remote locations, we offer an external battery pack for added power and the rugged design includes a removable front panel display cover to ensure the AL6700 is up for the challenges of remote environments and applications.

Key Features

- Portability & Durability
- Ethernet Remote Control
- Intuitive GUI
- User Configurable
- External Battery Pack
- Protective Front Panel Cover
- FireBerd 6000 Replacement
- Optional Rack Mount

Application Modules

- RF Transmitter
- PCM Recorder
- BER Tester
- Frame Synchronization
- Fiber/Ethernet Transport
- PCM Simulator
- Bit Sync Module
- Switching Modules

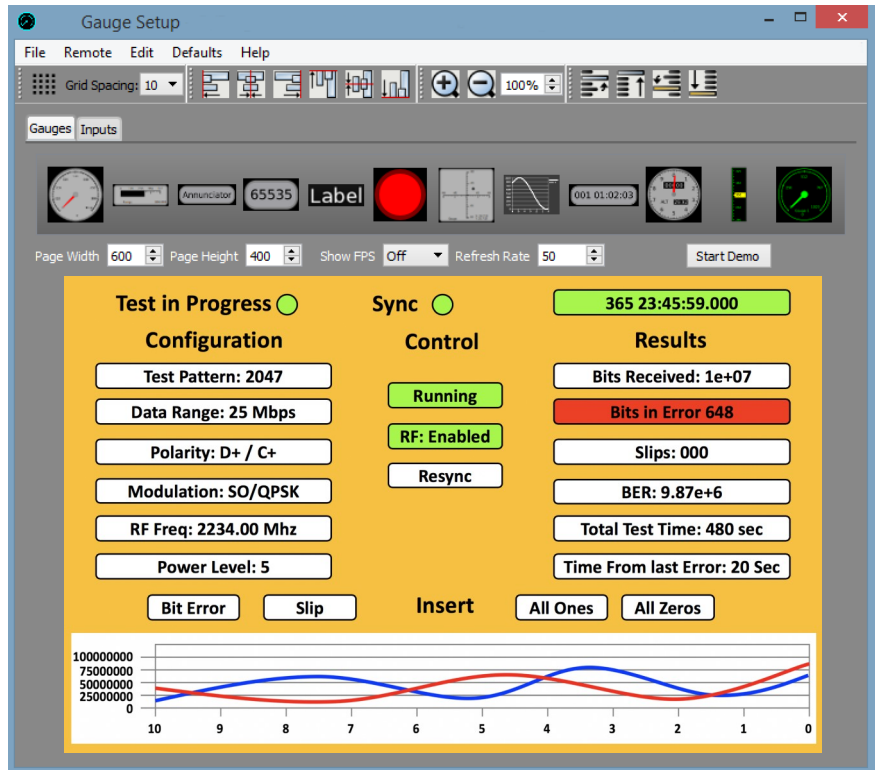
AL6700 System

Portable Test & Telemetry Unit

Set-up Software Overview

Easily Customized ~ Build Your Own Displays ~ Drag & Drop Design
Customize Charts/Images to Suit Your Needs ~ Intuitive GUI
Design New Pages On any PC ~ Call Up Pages Remotely or via Touchscreen Display

Our proprietary Set-up Software includes an intuitive drag and drop interface for users to quickly and easily build display pages that are customized to meet their unique requirements. Users have full control over which setup and status parameters are displayed, how they are displayed, and how the graphics change under their specified conditions. With an emphasis on minimizing equipment downtime and improving efficiency, page files can be created and saved on any PC, without removing the AL6700 from operation. Simply create the desired page and save it or transfer it to the unit for future use. When needed, the page can be called up on the unit either remotely or via the touchscreen display. Advanced features enable one to use our decom engine with their defined derived parameters to display results in a repeatable and easy to understand graphical result, which greatly simplifies the interpretation of complex scenarios.



Application Overview

Whether in a remote test site or telemetry/test facility, the AL6700 seamless interfaces with our full suite of products, as well as with a wide range of other common test and telemetry equipment.

