

RCC-APEX

Rugged Compact Computer

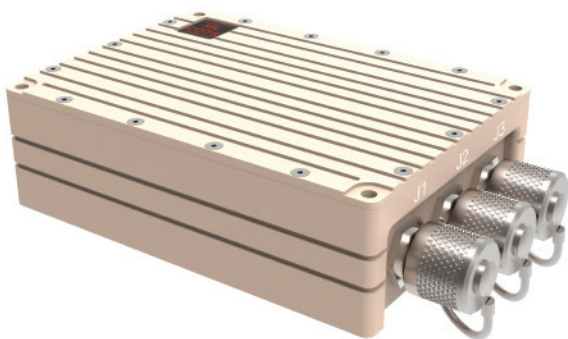
The RCC-APEX is a highly rugged compact computer designed for military aviation, navy and army vehicles. Rugged to survive severe environments and fully sealed, it will not be affected by heat, sand, dust, water spillage or shock. Designed around an Intel latest generation Atom processor, this fanless sealed computer is proposed in various configurations to address all field applications.

KEY POINTS

- Machine aluminum packaging, MIL standard compliant
- I/O configurable to address all applications
- Fanless design
- Connectors type and location configurable
- Extended temperature range

OPTIONS

- Attachment points
- Mating cables
- Custom ports
- Vehicle mount
- Pinout allocation
- OS (various versions)
- Digital I/O, Serial lines, video
- Power Supply



The RCC-APEX rugged compact computer is proposed with options to tailor the configuration to the application. From specific CPU, GPGPU, storage media or custom marking, its open architecture makes it the ideal platform to address specific requirements.

CONFIGURATIONS

Power supply: 8-16 VDC, 18-36 VDC, 12-36VDC

Interfaces: USB, Eth, Discrete, Serial, CAN...

CPU: Intel Atom dual / quad core, 4-8 GB DDRAM

OS: Windows, Linux

Storage: SSD, SD, CF, mSATA

Environment: EMI to MIL STD 461, Extended temperature, shock and vibration to MIL STD 810, IP ratings up to IP65,

Consult MILCOTS to establish a specific configuration



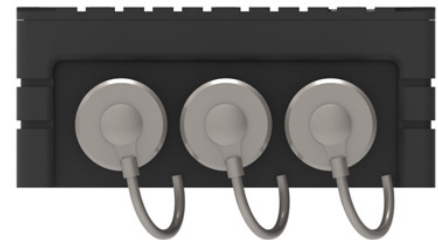
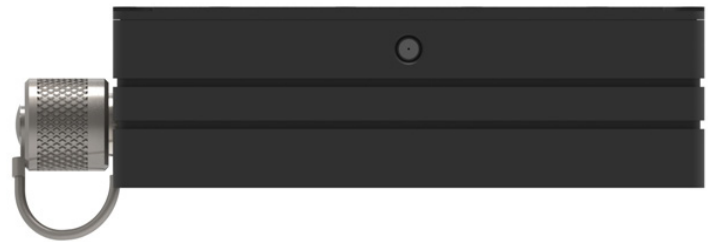
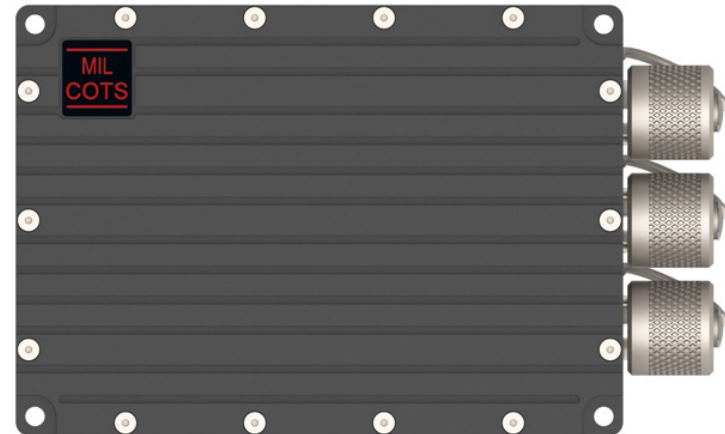
Milcots
SAFER WORLD GROUP

Rugged, Trusted

RCC-APEX Rugged Compact Computer

The RCC APEX rugged compact computer is designed around building blocks and can be proposed in a variety of configurations. The configuration below is an example of the suggested solutions:

TECHNICAL SPECIFICATIONS	
CPU	Atom E3845 1.9 GHz, 2MB cache
Memory	8 GB DDR3L
Storage	256 GB SSD
MMI	ON/OFF Power button
Connectors	Glenair Mighty Mouse
Dimensions	5.91" (W) x 3.94" (H) x 1.7" (T) 150mm (W) x 100mm (H) x 43mm (T)
Weight	1.75 lbs (0.8 kg)
Power	[9-18 VDC]
O/S	Windows 7, Windows 10 Linux RHE 7.0 and above
I/O	USB (x2) Gig Ethernet (x2)



ENVIRONMENTAL PERFORMANCE	
Operating Temp.	-40 °C to 65 °C (extended temp option)
Storage Temp.	-40 °C to +75 °C
Humidity	95 % @ 40 deg C
Altitude	0 to 45000 feet
Shock	40g / 15 ms , half sine MIL S 901D
Vibration	operating vibration 5G RMS 5 to 2000 Hz
Ingress Protection	IP65
EMC	MIL-STD-1275B, MIL-STD-461

360 Route 59 | Airmont, NY 10952 T 845.357.6700 F 845.369.0531 info@milcots.com
www.milcots.com

