



Pentek Talon RTX SFF



Features

- Rugged 1/2 ATR MIL-spec chassis
- Designed to MIL-STD-810 for harsh mechanical and thermal environments
- Environmentally sealed
- Internally conduction-cooled
- Designed to MIL-STD-461 for radiated and conducted RF
- EMI power line filter
- Compact and lightweight design - 22 lb (10 kg)
- Ideal for UAVs, military vehicles, aircraft pods and outdoor environments
- RF/IF recording with eight phase coherent 250 MHz 16-bit A/Ds
- Sustained real-time record rates up to 4 GB/s
- The Pentek QuickPac drive packs add a valuable convenience to the 1/2 ATR recorder
- 12 to 28 VDC power supply
- Optional GPS receiver for precise time and position stamping
- SystemFlow API, GUI and Signal Viewer analysis tools

General Information

Pentek’s Talon RTX Small Form Factor (SFF) recorders provide the performance of large rackmount recorders in the smallest footprint available in Pentek’s Talon Recording System product line. Packaged in an extremely rugged 1/2 ATR form factor, these recorders provide high-performance processing, high speed data storage and large solid state storage capacity.

Optimized for SWaP (size, weight and power,) Talon RTX SFF recorders are packaged in a 1/2 ATR footprint, measuring 7.688" H x 4.880" W x 14.125" D and weighing only 22 pounds (10 kg). These recorders are capable of sustained real-time recording speeds up to 4 GB/s and can hold up to 30 TB of SSD storage.

Power consumption has been greatly reduced in this package. A standard system will draw approximately 110 Watt full operation.

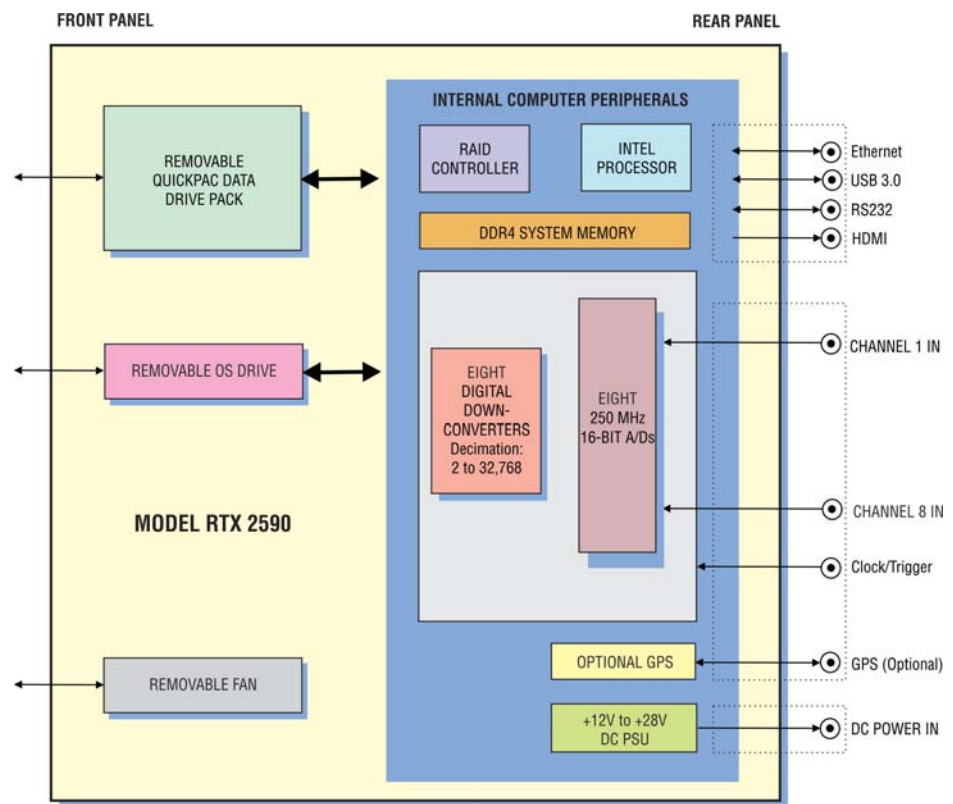
The Model RTX 2590 provides eight phase-coherent channels of 250 MHz 16-bit A/Ds, allowing users the ability to capture up to 100 MHz of RF/IF signal bandwidth per channel with excellent dynamic range. It can sample RF/IF signals up to 700 MHz and provides digital downconverters with selectable decimation of 2 to 32,768.

Extremely Rugged Design

Designed to operate in the toughest environments, the recorder chassis keeps all electronics sealed from the outside environment and removes heat by conducting to forced-air cooling channels. Designed to operate from -40° to +60° C, these recorders can operate in most thermal environments, making them ideal for UAVs, aircraft pods, tight equipment bays, military vehicles, and most outdoor environments.

The sealed ½ ATR chassis uses circular connectors for I/O to control RF emissions while protecting the recorder’s electronics from humidity, water, dust, sand and salt fog. Designed to meet MIL-STD-461 specifications for radiated RF emissions, conducted emission military specifications are met by design with a built-in conducted emissions filter.

Designed to handle high levels of shock and vibration, this extremely rugged chassis supports Pentek’s extensive line of I/O front-ends, providing multichannel, wide bandwidth RF recording. An optional GPS receiver provides precise time stamping of recordings and can track and record the GPS position of the system during operation. ➤



Using QuickPac Drive Packs

The Pentek QuickPac drive packs add a valuable convenience to the RTX SFF 1/2 ATR recorder by providing the ability to quickly remove all data storage from the recorder via the front panel.

With up to 30 TB of solid-state data storage capacity, QuickPac drive packs can be easily removed from the recorder by loosening a set of captive thumb screws.

A separate Operating System drive can be removed as well, allowing the users to extract all non-volatile memory from the system in just a few seconds.

QuickPac drive packs include a high insertion cycle connector to provide an extremely durable data storage drive for Talon Recorders.

Spare QuickPac drive packs can replace full ones in seconds to minimize mission downtime. QuickPac drive packs filled with mission data can be taken to the lab where data can be retrieved, post-processed and archived with a Talon offload system.



A QuickPac drive pack and the OS drive being removed from the front of a recorder



A QuickPac drive pack removed from the recorder

Sealed Chassis with Cooling Design

The Talon RTX SFF chassis seals the internal electronics from the outside environment by providing an inner plenum that is designed to extract heat from the internal electronics via conduction.

The plenum is supplemented by a removable fan that is used to pull air from the front of the chassis and exhaust it through the rear. Only the fan is exposed to the outside environment, assuring the electronics are protected in the sealed chassis.

The removable fan pulls air from the front of the chassis across heat sinks that are welded to the inner plenum of the chassis.

The welded heat sinks are attached directly to all heat generating electronics within the sealed chassis providing a conduction-cooled path to the inner plenum. This assures optimal cooling while maintaining a sealed design. The inner plenum can be replaced to provide other cooling options, such as liquid or conduction-cooling.



The fan assembly being removed from the back of the recorder



The fan assembly removed from the recorder

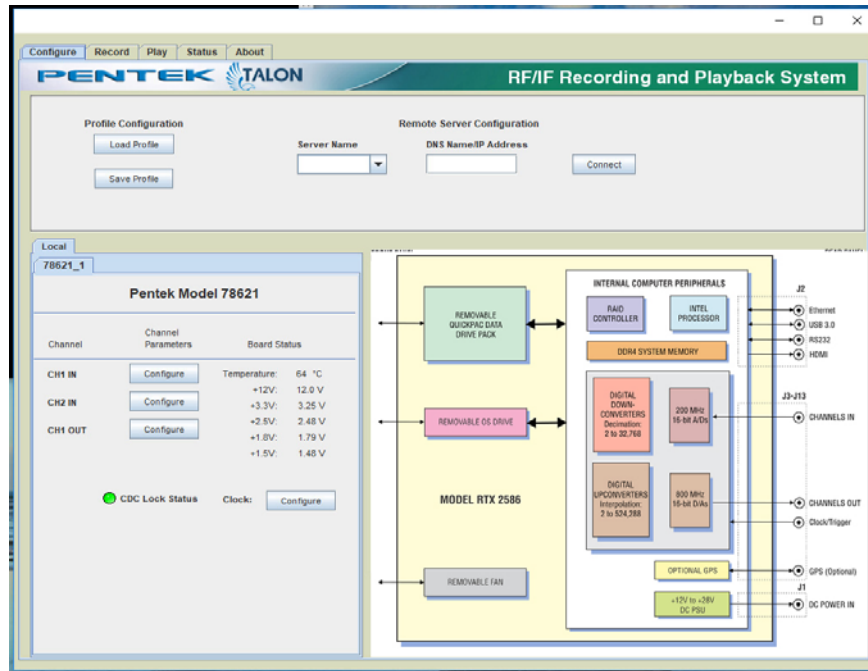


Rear Panel I/O

Rear Panel I/O

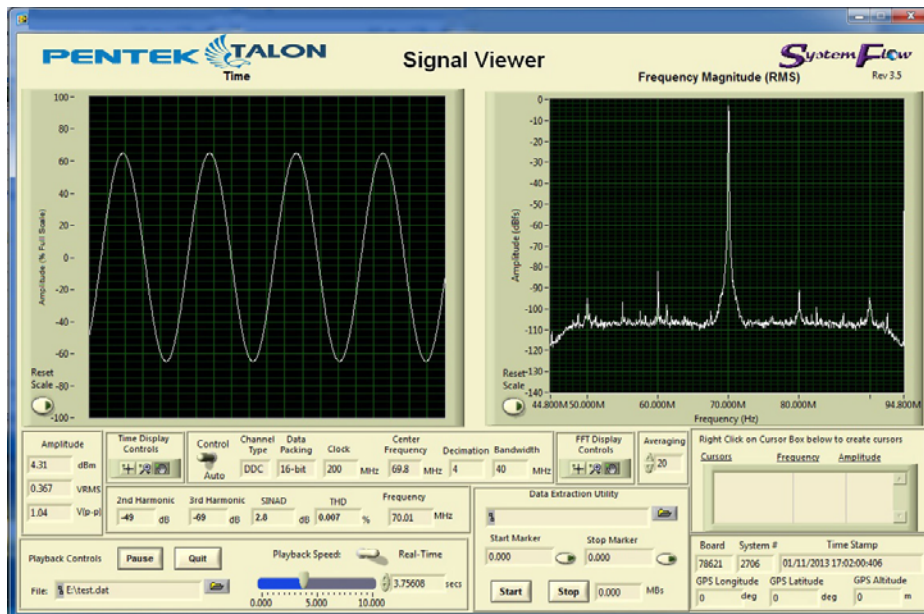
The Talon RTX SFF rear panel I/O provides circular connectors for power and computer I/O. Bulkhead mounted SMA connectors for RF signals, GPS, clocks and triggers are sealed with gaskets for moisture and RF emissions protection. Optical I/O is provided via an optional rear panel connection. ➤

SystemFlow Graphical User Software



All Talon RTX SFF recorders include the Pentek SystemFlow[®] recording software. SystemFlow features a Windows-based GUI (Graphical User Interface) that provides a simple means to configure and control the recorder.

SystemFlow includes signal viewing and analysis tools, that allow the user to monitor input signals prior to, during, and after a recording session. These tools include a virtual oscilloscope, a spectrum analyzer and spectrogram displays.



SystemFlow uses a client/server architecture to allow the real-time recording software to run on the Talon recorder independent of the control software that can run on an external computer.

System engineers can use the SystemFlow GUI to control the system remotely or develop a custom interface using the SystemFlow API (Application Programming Interface). Remote control takes place over gigabit Ethernet.

Recordings are kept simple to allow for extremely high bandwidth data storage, streaming only the raw data to disk. A simple header that holds the recording parameters is added to the beginning of the file.

An optional GPS receiver allows the user to precisely timestamp files and optionally track the recorder's position throughout a mission. The system records all data to the native NTFS file system, allowing for quick and easy access to the data from any computer. ➤

Specifications

Physical Characteristics

Dimensions: 7.688" H x 4.880" W x 14.125" D

(195 mm H x 124 mm W x 359 mm D)

Weight: 22 lb (10 kg)

Storage: One removable Quickpac drive pack with up to 30.72 TB total storage

RAID Levels: 0, 5 and 6 available

One removable Operating System SSD (M.2 form factor - 250 GB standard)

Front Panel I/O

One removable QuickPac drive pack (Thumbscrew removable)

One removable Operating System SSD (Thumbscrew removable)

One removable System Fan (Thumbscrew removable)

Rear Panel I/O

Chassis power connector: Amphenol 2M805-002-16M12-2PA

Mating cable power connector: Amphenol 2M805-002-16M12-2PA

Computer I/O

Chassis Computer I/O Connector: Amphenol 2M805-005-07M19-85SA

Signals, one each: HDMI, USB 3.0, Ethernet(RJ 45), RS23

Mating cable computer I/O Connector: Amphenol 2M805-002-16M19-85PA

RF: 11x SMA (female SMA bulkhead mounted with gaskets)

Cooling

Conduction-cooled to inner air channel

Removable fan inserted in air channel to push air across sealed heat sinks

Optional direct conduction-cooling and other methods available

Power

+12 to +28 VDC (+24 VDC nominal) 110 Watts power consumption typical, 140 Watts maximum

Analog Signal Inputs

Number of Inputs: Eight

Connectors: Female bulkhead SMA connectors

Input Type: Transformer-coupled (DC-coupled option available)

Transformer Type: Coil Craft WBC4-6TLB

Type: Texas Instruments ADS5485

Sampling Rate (fs): 10 MHz to 250 MHz

Resolution: 16 bits

SNR: 75 dBFS Typ. @ 70 MHz

SFDR: 87 dBc Typ. @ 70 MHz

Full-scale Input: +2 dBm into 50 ohms

3 dB passband: 300 kHz to 700 MHz

Anti-Aliasing Filters: External, user supplied

Digital Downconverters

Decimation: 2 to 32,768

IF Center Frequency Tuning: DC to fs, 32 bits

LO SFDR: >120 db

DDC Usable Bandwidth: 0.8* fs/D

Clock Sources

Source: selectable from onboard programmable VCXO, or external clock

External Clock Connector: Female bulkhead SMA connector

External Clock Signal Requirement: Sine wave 0 dBm to 10 dBm full scale

External Trigger

External Trigger Connector: Female bulkhead SMA

External Trigger Signal Requirement: TTL

Processor and Memory

Processor: Intel Core i7, 7700K, 7th Generation, Quad Core, 4.2 GHz

DRAM: 8 GB DDR 4, optional 16 to 32 GB

Environmental

Operating Temp: -40° to +60° C

Storage Temp: -65° to +85° C

Operating Altitude: 60,000 feet maximum

Relative Humidity: 5 to 95%, condensing

Vibration: Designed to MIL-STD-810 Method 514.5

Shock: Designed to MIL-STD-810 Method 516.5

EMI/EMC: Designed to MIL-STD-461 - CE101, CE102, CS101, RE101, RE102, RS101

Options

Storage Options

Option -410 3.84 TB SSD

Option -415 7.68 TB SSD

Option -420 15.36 TB SSD

Option -430 30.72 TB SSD

RAID Configurations

Standard RAID Level 0

Option -285 RAID Level 5

Option -286 RAID Level 6

Additional Options

Option -261 GPS Time and Position Stamping

Standard 8 GB DDR Memory

Option -309 16 GB DDR Memory

Option -310 32 GB DDR Memory

Specifications are subject to change without notice